

To: Finance Committee

From: Kimberly Ptak

Date: Monday, December 4, 2017

Re: Black Box Theaters

Background

In December, 2013, district and building administration presented an enrollment and capacity study to the Board. As a follow-up, in the Spring of 2014, a report on student athletic and activity opportunities was shared with the Board where GBN and GBS both brought forward the need for additional performance venues. Since that time, the topic of Black Box Theaters has been discussed and Arcon has created renderings along with cost estimates based on Black Box theaters constructed in neighboring districts.

This information, as well as an estimated annual operating cost of maintaining and managing a Black Box theater is attached. This information was shared at the September 20, 2017 Facility Committee meeting where it was recommended it discussed with the Finance Committee.

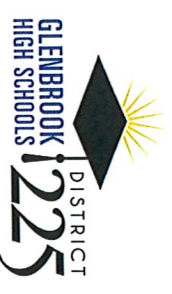
Estimated Annual Operating Cost Per Black Box Theater					
Director Stipend					
Fall	\$8,171				
Winter	\$8,171				
Spring	<u>\$8,171</u>				
	\$24,513				
Assistant Director Stipend					
Fall	\$4,810				
Winter	\$4,810				
Spring	<u>\$4,810</u>				
	\$14,430				
Theater Manager - 10 month	\$46,362				
Custodial - .25	\$15,000				
Energy	\$15,000				
Upkeep and Maintenance	\$10,000				
	\$125,305				
Estimated Black Box Theater Cost: \$3.5M - \$4.1M per Theater (based on rendering and theaters in neighboring districts)					

2017 Black Box Addition Study

for

Glenbrook High Schools District 225

October 10, 2017



what is a black box theater ?

What is a Black Box Theater?

A Black Box Theater is a flexible, versatile performance space intended to house small performances and informal presentations. It is a simple, open space that serves the purpose of connecting the audience to performers in an intimate setting.

Typical Spatial Requirements

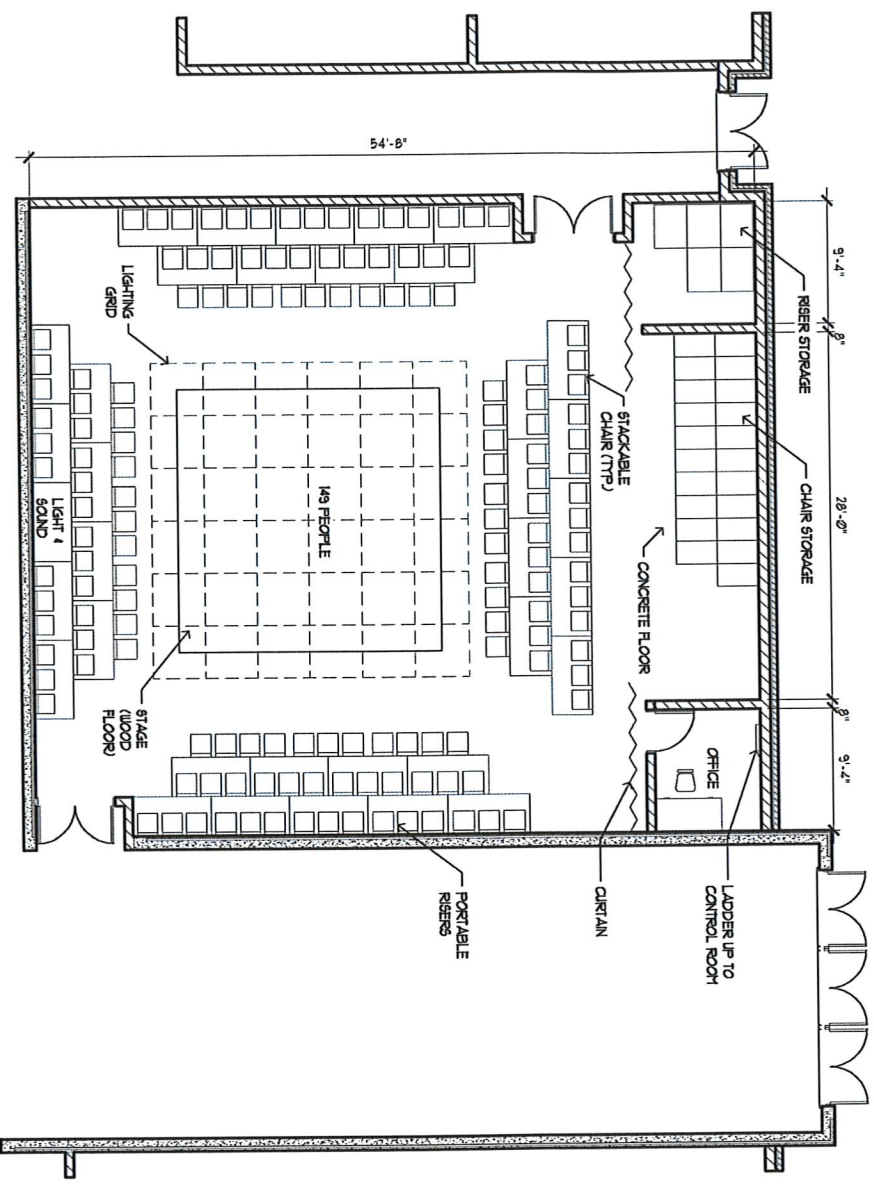
A Black Box is typically a large, square room with black walls, floor and ceiling, moveable seating and stage and a flat floor. Black Boxes include tall ceilings with auxiliary spaces such as preparation/scene shops, lobby vestibules, and storage. It should be located in close proximity to restrooms. Common space configurations include theater in the round, thrust stage, and lecture.

Technical Features

Historically, black box spaces have included low pipe grids to support theatrical lighting. Newer experimental theaters feature a catwalk at the room perimeter for theater lighting equipment, ceiling adjustments and maintenance. Acoustical ceiling and wall panels control sound. Sound and lighting systems and controls are also critical features. Moveable curtains and partitions help to increase flexibility and performance options.

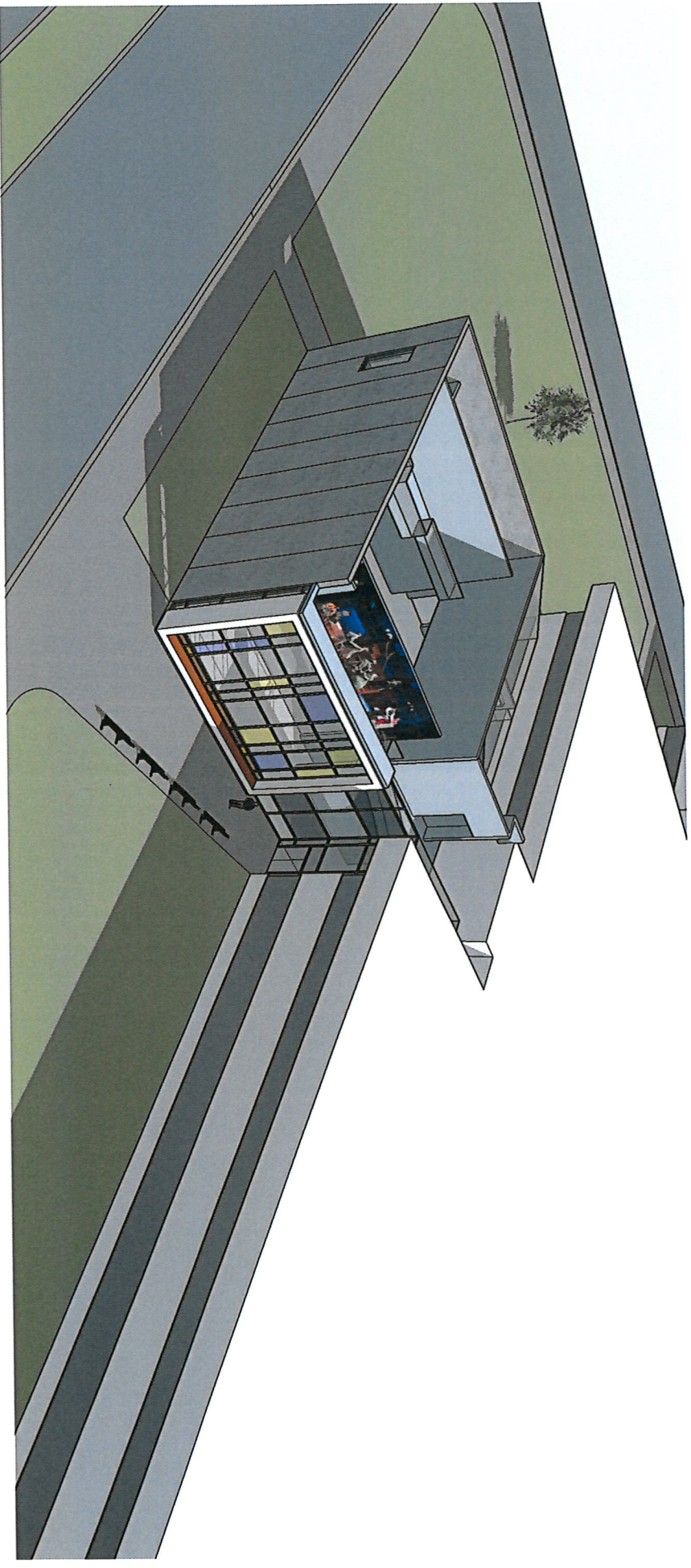
reference projects

reference project



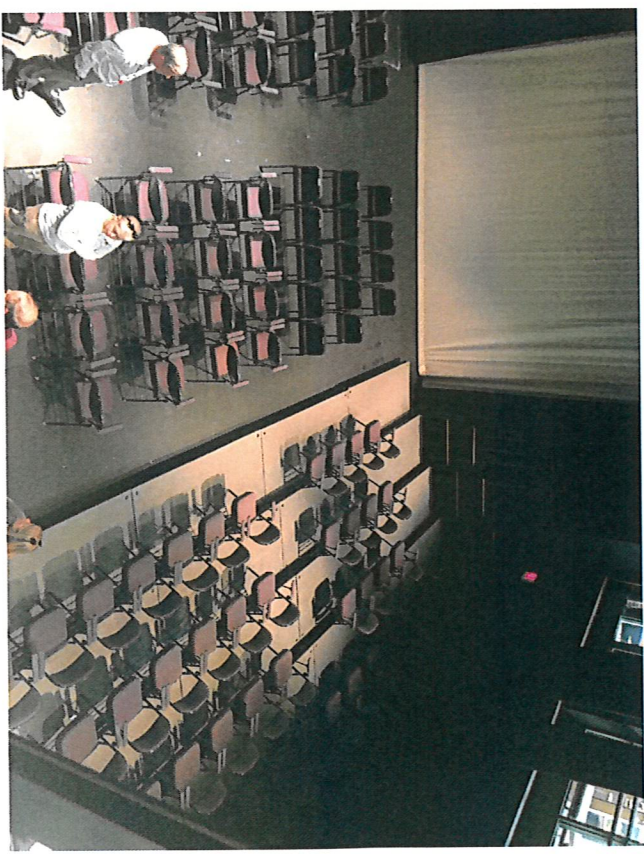
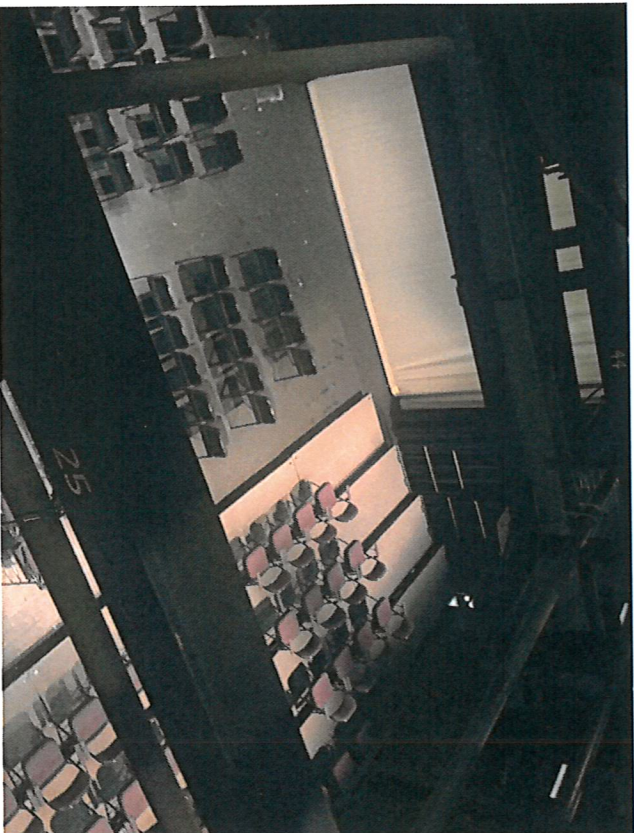
Black Box Theater Layout Study - "In the Round"

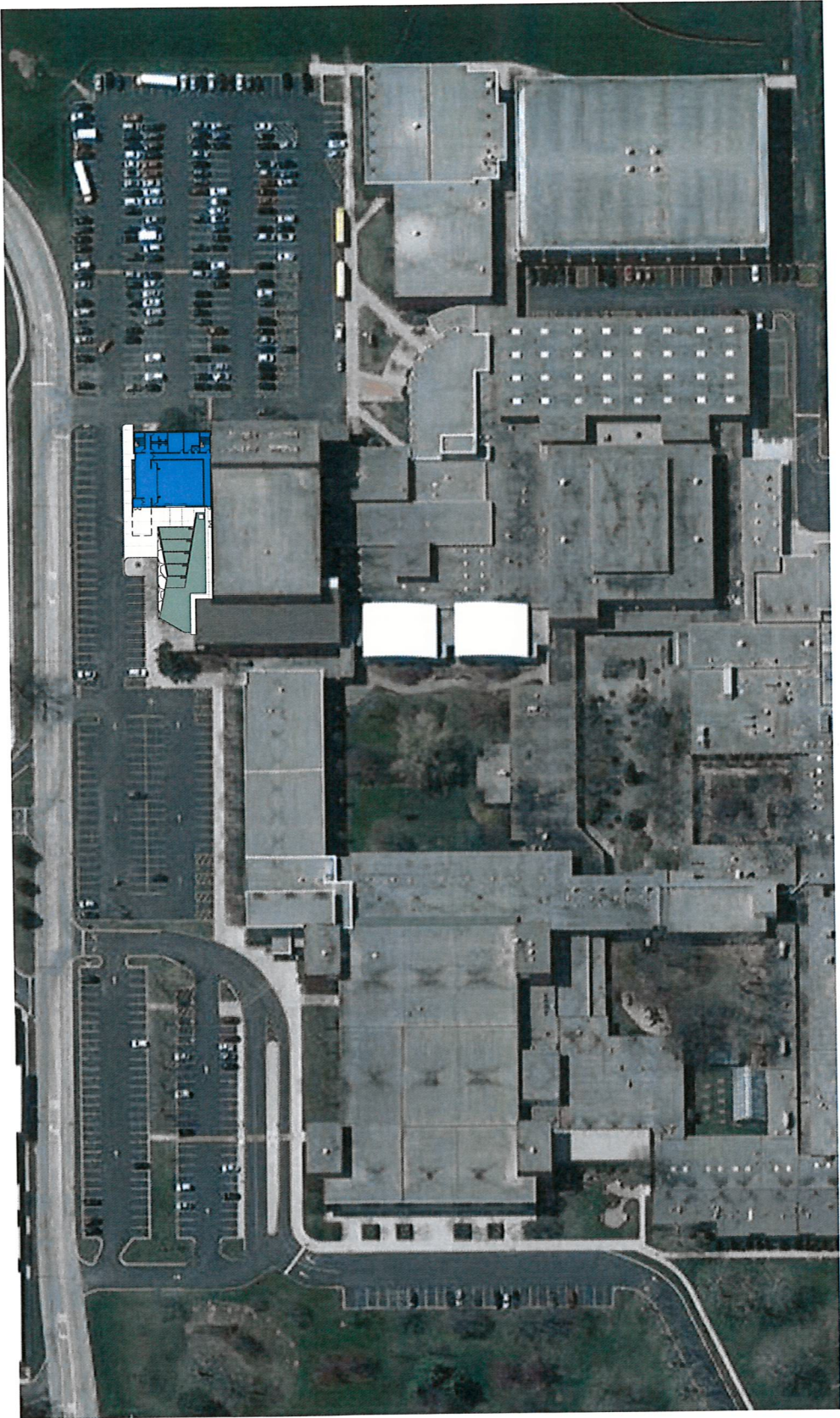
reference project



NORTHWEST AERIAL VIEW

reference project





1 SITE PLAN
1" = 100'-0"

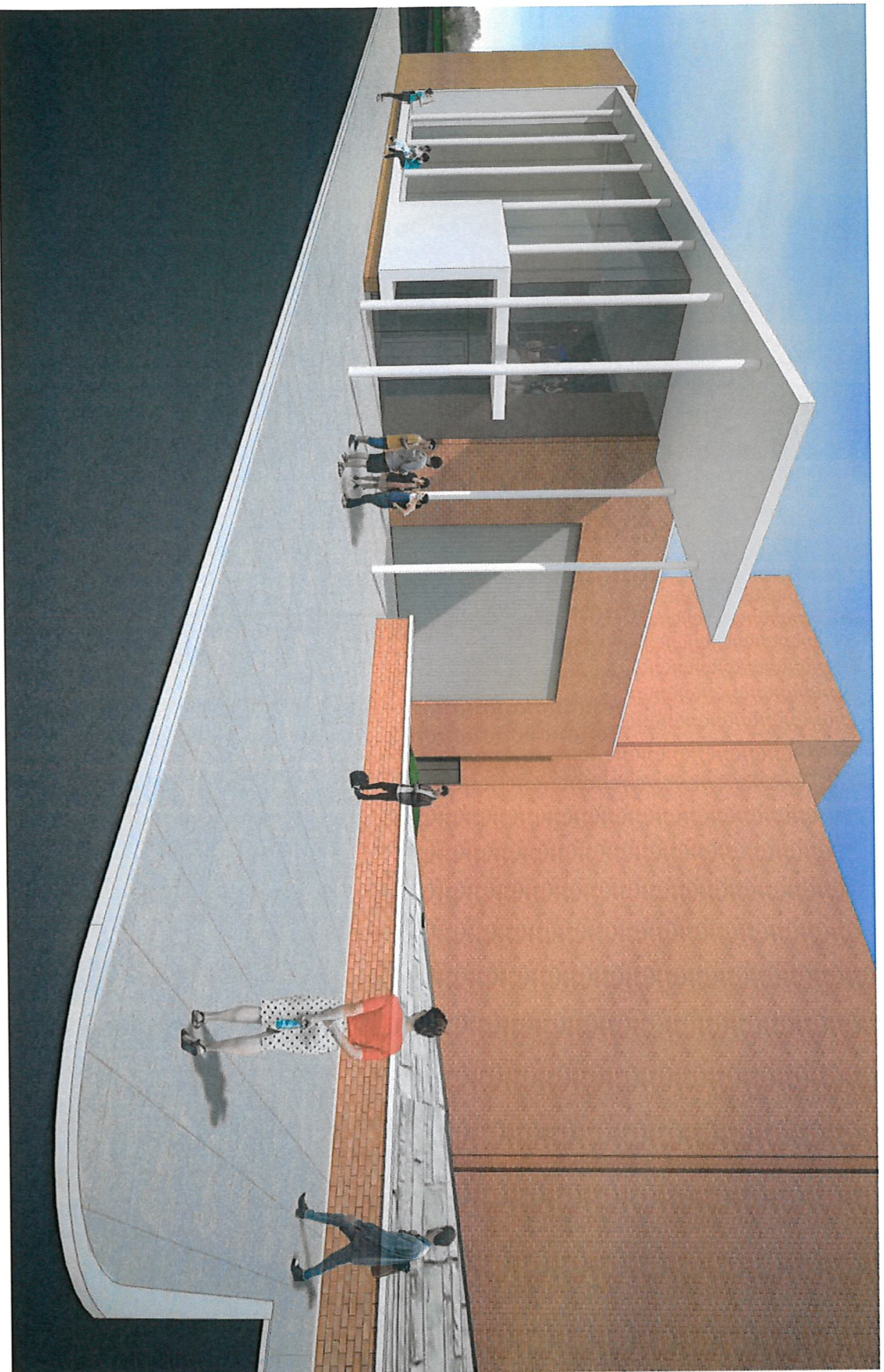


ARCON GLENBROOK HIGH SCHOOL DISTRICT 225
Glenbrook North High School - Black Box Theater Addition
October 10, 2017



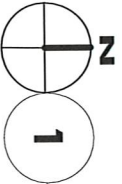
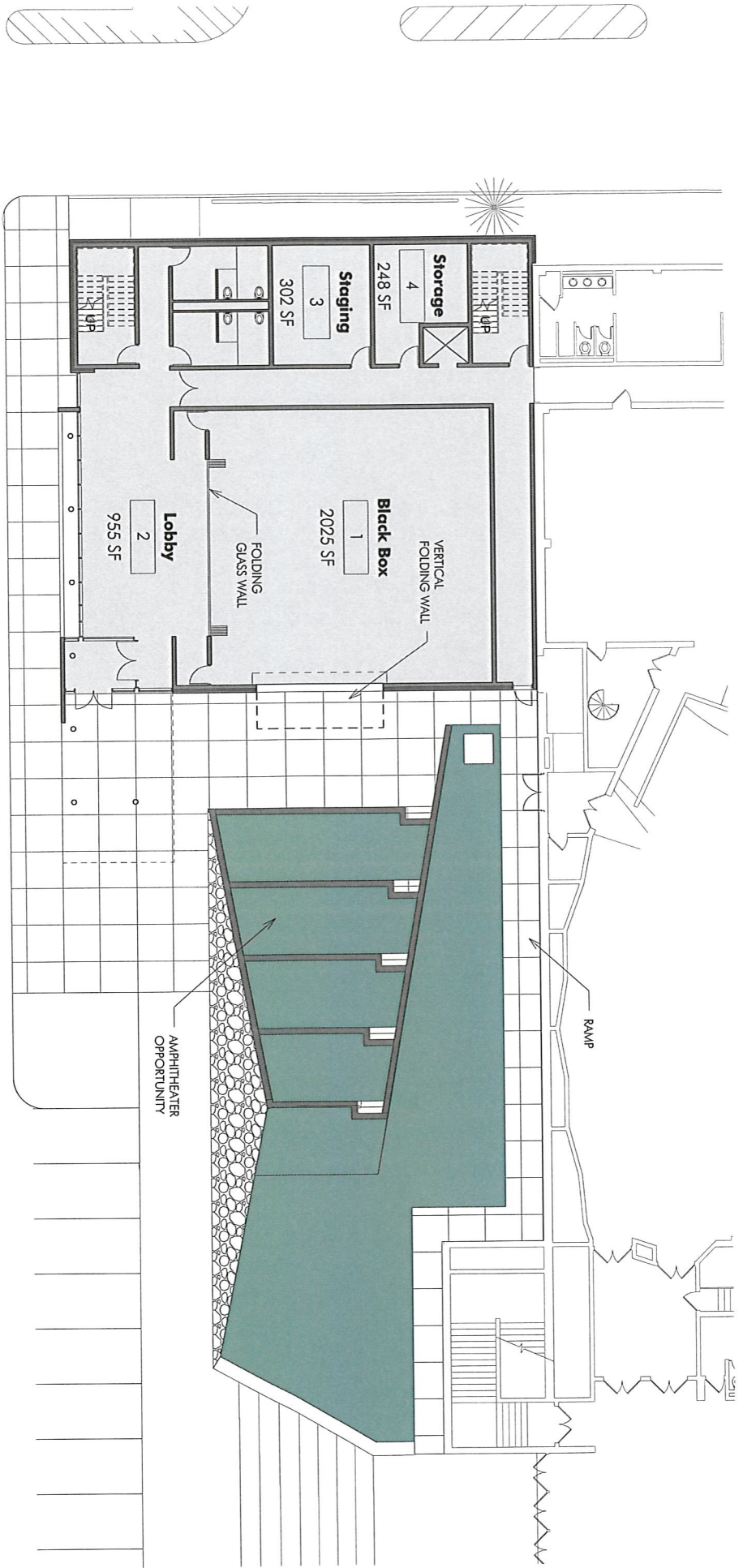






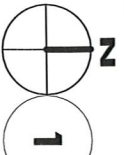
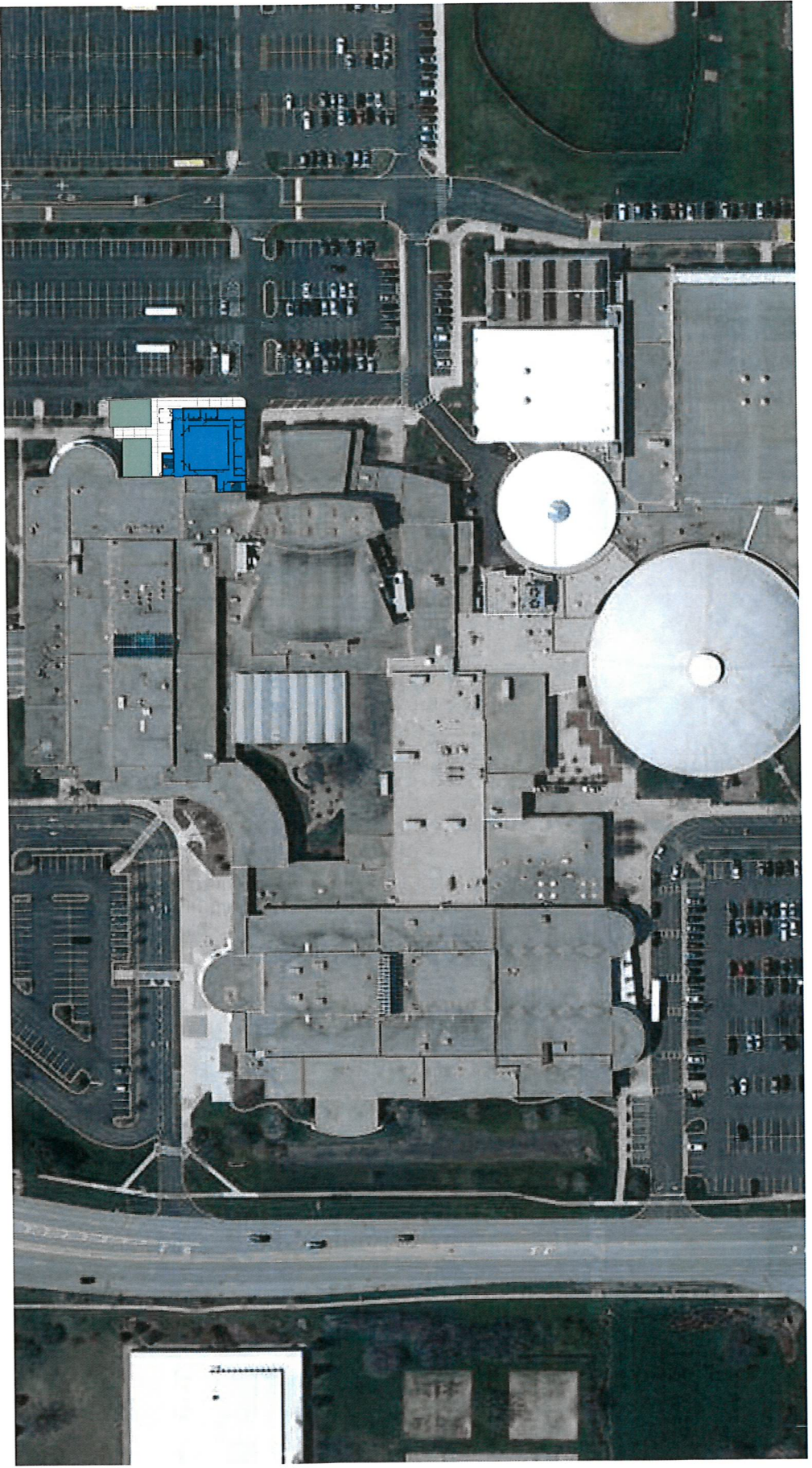






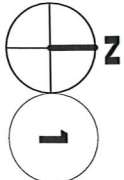
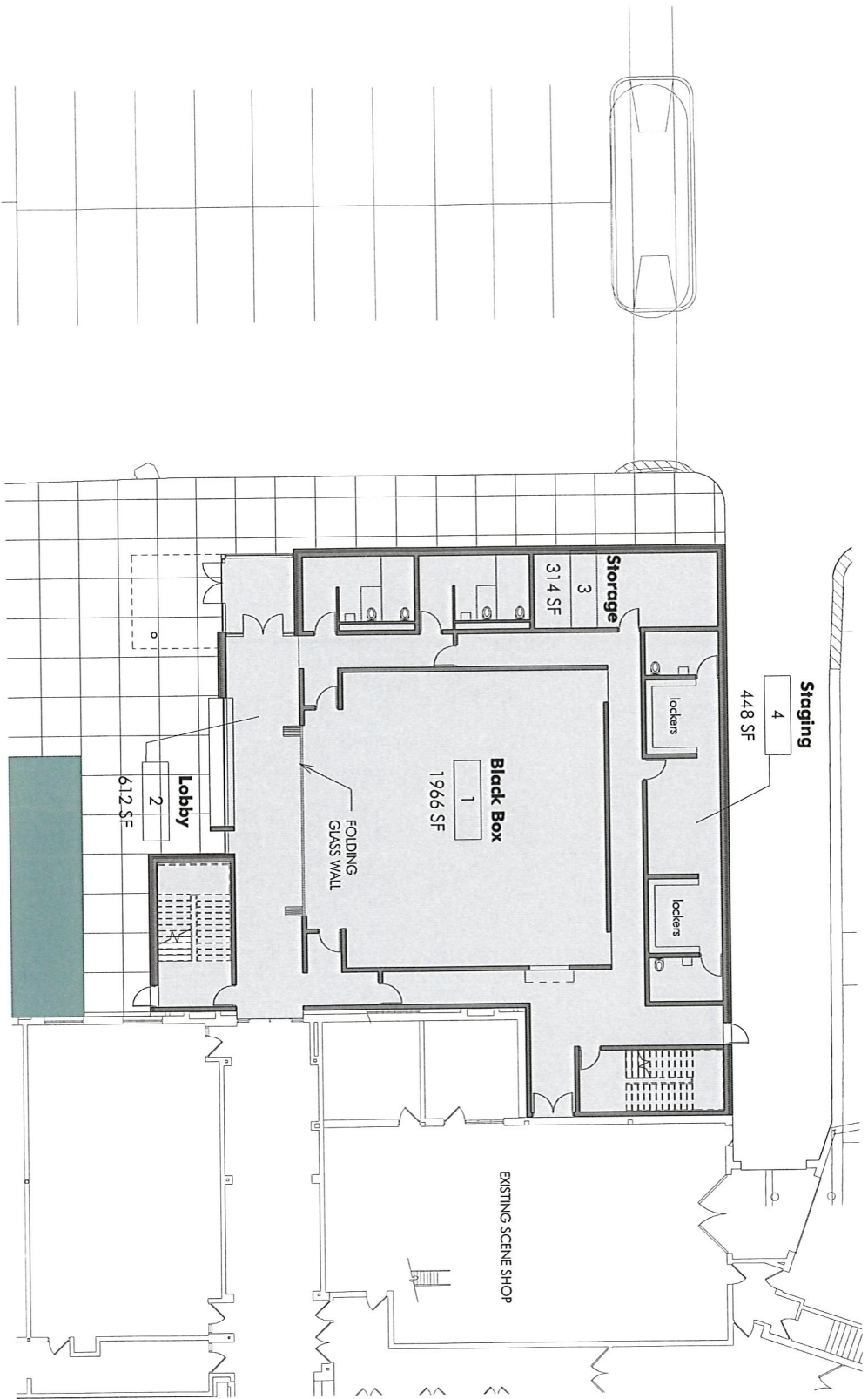
FIRST FLOOR PLAN

1
1/16" = 1'-0"



SITE PLAN

1" = 100'-0"



FIRST FLOOR PLAN





