
OFFICE OF THE ASSISTANT SUPERINTENDENT FOR EDUCATIONAL SERVICES

TO: DR. MIKE RIGGLE
FROM: BARB DILL-VARGA
SUBJECT: STUDENT ACHIEVEMENT AND DASHBOARD REPORTS
DATE: SEPTEMBER 17, 2008
CC: BOARD OF EDUCATION

Changes in Dashboard Report Formats and Timetable!

We have spent some time in Executive Cabinet talking about the purpose and relevancy of our dashboard reports. While they provide an excellent reference tool for those in search of various statistics, we know that many pages are not as useful and may actually obfuscate the sharpened focus we seek. Our discussion on this issue addressed the question: "When and why do we need data and how do we use it when it is available? We acknowledged that we need data for at least the following two reasons:

- ✓ To provide explanations or support for various *timely* conversations about student achievement which impact long range financial planning
- ✓ To catalyze an annual, comprehensive, proactive look at the district from a number of angles for the purposes of planning and accountability

To better serve those purposes in an efficient fashion we have decided to:

- 1) Bring sections of a streamlined dashboard report to the Board *when* issues arise (i.e. school report card data and NCLB). For example, **the report titles in bold** on the attached list signifies reports that will be presented at the **September 22, 2008 Board Meeting** as we look at the recently released student achievement data.
- 2) Annually, at the **February** Board meeting, a single **Executive Summary** that merges financial dashboards from the business office, reports on student achievement, and statistics on student and staff demographic information, will be brought to the Board. This will be a comprehensive document to assist administrators and the board in future planning. Reports included in the Executive Summary that relate to student achievement and student / staff demographics are listed in **blue**. Additional reports will be added from the business department to complete this single unified document.

The following attachment lists the charts that the Board can expect to see during a given year. All of these will also be made available on our website.

September 22 - Board Meeting Focus:

At the September 22 Board meeting, we will be bringing to the Board pertinent data that has become recently available related to student achievement especially as evidenced in the Prairie State Achievement Exam and Advanced Placement exams administered last spring. Additionally, we will provide the board with pertinent student demographic data to give this discussion an appropriate context. School Report Cards will be released by the state board of education at the end of October, so it is appropriate that, in advance of that date, we review what we know relative to No Child Left Behind and our adequate yearly progress. The attached dashboard reports will provide you with necessary background information for the administrative PowerPoint presentation at the Board meeting on this topic.

Revised Catalogue of Dashboard Reports for Northfield Township High School District 225 (2008-2009)

I. Student Demographics

[Executive Summary](#)

- [Enrollment](#)
- [Student Ethnicity Distribution](#)
- [Limited English Proficient Students \(%\)](#)
- [Low Income Students](#)
- [Attendance Rates](#)
- [Drop Out Rates](#)
- [Student Graduation Rates](#)
- [Students Continuing on to College](#)

- Glenbrook North Student Enrollment Projected to Actual
- Glenbrook South Student Enrollment Projected to Actual
- District 225 Student Enrollment Projected to Actual

II. Student Demographics – Special Education

[Special Education Type Distribution \(District 225\)](#)

III. Teaching Staff Demographics

[Executive Summary](#)

- [Teaching Staff Gender Distribution](#)
- [Teaching Staff Ethnicity Distribution](#)
- [Teachers](#)

- Certified Staff Lane Position
- Certified Staff Total Years of Experience Breakdown
- Certified Staff Turnover

IV. Student Achievement

[Executive Summary](#)

- [Average All-Subject Credits Taken by Graduates](#)
- [Average Number Credits Taken by Graduates](#)
- [Average GPA](#)
- [Average ACT](#)
- [Average ACT Score by Ethnicity](#)
- [National Merit](#)
- [PSAE Performance Levels by Subject Matter](#)
- [PSAE Performance Levels](#)
- [PSAE Performance by Ethnicity](#)
- [PSAE – IEP Student Performance Levels](#)

- [Average Academic GPA by Quartile](#)
- [Number of Advanced Placement Exams Taken](#)
- [Percent of AP Exams Scoring 3 or Better](#)
- [Average Composite ACT Score \(By Ethnicity\)](#)
- [Average Reading PSAE Score](#)
- [Average Math PSAE Score](#)
- [Average Science PSAE Score](#)
- [Average Reading PSAE Score \(By Ethnicity\)](#)
- [Average Math PSAE Score \(By Ethnicity\)](#)
- [Average Science PSAE Score \(By Ethnicity\)](#)
- [Average PSAE Score by Subject Area \(Low Income Students\) Performance Levels](#)
- [Average PSAE Score by Subject Area \(Special ED\) Performance Levels](#)
- [PSAE Percentage of Student Meeting or Exceeding in at least one PSAE Subject Area](#)
- [PSAE – Low Income Students Performance Levels](#)
- Percentage of Junior Class (PSAT/NMQST Test Takers)
- Average Composite PLAN Score
- Average English PLAN Score
- Average Math PLAN Score
- Average Reading PLAN Score
- Average Science PLAN Score
- Average Composite PLAN Score (By Ethnicity)
- Average English PLAN Score (By Ethnicity)
- Average Math PLAN Score (By Ethnicity)
- Average Reading PLAN Score (By Ethnicity)
- Average Science PLAN Score (By Ethnicity)



Dashboard Reports

**Glenbrook High Schools
Northfield Township District 225
2008-2009**

TABLE OF CONTENTS

Student Demographics Executive Summary	1
Enrollment.....	1a
Student Ethnicity Distribution.....	1a
Limited English Proficient Students (%).....	1a
Low Income Students.....	1b
Attendance Rates.....	1b
Drop Out Rates.....	1b
Student Graduation Rate.....	1c
Students Continuing on to College.....	1c
Student Achievement Executive Summary	2
Average All-Subject Credits Taken by Graduates.....	2a
Average Number Credits Taken by Graduates.....	2a
Average GPA.....	2a
Average ACT – School and District.....	2b
Average ACT Score by Ethnicity - District.....	2b
PSAE Performance Levels by Subject Matter - District.....	2c
PSAE Performance Levels by Subject Matter - School.....	2c
PSAE Performance by Ethnicity by Subject Matter – District.....	2d
PSAE – IEP Student Performance Levels by Subject Matter – School.....	2e
Average Academic GPA by Quartile.....	3
Number of Advanced Placement Exams Taken.....	4
Percentage of AP Exams Scoring 3 or Better.....	4
Average Composite ACT Score (By Ethnicity).....	5
Average Reading PSAE Score.....	6
Average Math PSAE Score.....	7
Average Science PSAE Score.....	8
Average Reading PSAE Score (By Ethnicity).....	9
Average Math PSAE Score (By Ethnicity).....	10
Average Science PSAE Score (By Ethnicity).....	11
Average PSAE Score by Subject Area (Low Income Students) Performance Levels.....	12
Average PSAE Score by Subject Area (Special ED) Performance Levels.....	13
PSAE Percentage of Student Meeting or Exceeding in at least one PSAE Subject Area.....	14
PSAE – Low Income Students Performance Levels.....	15

Student Demographics Executive Summary

Enrollment

GBN
GBS
District 225

1999	2003	2008	2016
1866	2085	2118	2035
2320	2500	2591	2771
4186	4585	4709	4806

Source Data: Illinois Public Fall Housing Report for Northfield Township High School; Enrollment Projections by District 225

Student Ethnicity Distribution

	2003			
	GBN	GBS	District	State
White	84.0%	76.8%	80.0%	58.6%
African American	0.3%	1.8%	1.1%	20.7%
Hispanic	1.1%	5.8%	3.6%	17.0%
Asian/Pacific Islander	14.6%	15.4%	15.0%	3.6%
Native American			0.1%	
Mult-Racial			N/A	

	2008			
	GBN	GBS	District	State
White	83.1%	72.0%	77.0%	54.0%
African American	0.6%	2.4%	1.6%	19.2%
Hispanic	2.0%	7.2%	4.9%	19.9%
Asian/Pacific Islander	12.9%	16.6%	15.0%	3.9%
Native American	0.0%	0.1%	0.1%	0.2%
Mult-Racial	1.3%	1.7%	1.5%	2.7%

Source Data: Illinois School Report Card

Limited English Proficient Students (%)

GBN
GBS
District 225
State

	2003	
	%	Count
GBN	1.0%	20
GBS	5.0%	125
District 225	3.2%	145
State	6.3%	128806

	2008	
	%	Count
GBN	1.4%	30
GBS	4.9%	127
District 225	3.3%	155
State	7.5%	155563

Source Data: Illinois School Report Card

Low Income Students

	2003		2008	
	%	Count	%	Count
GBN	1.8%	37	2.1%	44
GBS	6.3%	157	12.9%	334
District 225	4.2%	194	8.0%	377

Source Data: Illinois School Report Card

Attendance Rates

	2003		2008	
	%	Count	%	Count
GBN	95.3%		93.7%	
GBS	95.6%		94.5%	
District 225	95.5%		94.1%	
State	94.0%		93.3%	

The district attendance policy was revised during the 2002-2003 school year. At GBS, the new policy was first piloted in 2001-02 and was fully implemented during the first semester of 2002-03. At GBN the policy was implemented during second semester of 2002-03.
*Actual attendance rate is higher than reported on State Report Card. Auditor procedures for the alternating day block schedule cause the overall attendance rate to be slightly lower than actual for GBN.

Source Data: Illinois School Report Card

Drop Out Rates

	2003		2008	
	%	Count	%	Count
GBN	0.0%	0	0.0%	2
GBS	0.3%	7	0.1%	5
District 225	0.2%	7	0.1%	7
State	4.9%	100,182	4.1%	85,041

Source Data: Illinois School Report Card

Student Graduation Rate

	2003(%)	2008 (%)
GBN	96.3%	99.0%
GBS	94.5%	99.6%
District 225	95.3%	99.3%
State	86.0%	86.5%

Source Data: Illinois School Report Card

Students Continuing on to College

2003					
% of Graduates that Continued to College		% of Students that Continued on to College Attending a 2 or 4 year college			
		2-Year		4-Year	
	% Count	%	Count	%	Count
GBN	95.5% 463	9.5%	44	90.5%	419
GBS	95.9% 562	18.1%	102	81.9%	460

2008					
% of Graduates that Continued to College		% of Students that Continued on to College Attending a 2 or 4 year college			
		2-Year		4-Year	
	% Count	%	Count	%	Count
GBN	96.0% 480	6.5%	31	93.5%	449
GBS	96.4% 635	20.3%	129	79.7%	506

Source Data: GBN and GBS College Counselor.

Student Achievement Executive Summary

Average All-Subject Credits Taken by Graduates

GBN
GBS

2003	
GBN	27.08
GBS	26.50

2008	
GBN	27.69
GBS	26.83

Source Data: District 225 OutCASTS and SASI-XP Database

Average Number Credits Taken by Graduates

GBN
GBS

2008				
	English	Mathematics	Science	Social Studies
GBN	4.48	3.86	3.91	3.77
GBS	4.69	3.76	3.51	3.56

Source Data: District 225 OutCASTS and SASI-XP Database

Average GPA

GBN
GBS

2003	
All Subject	Academic
GBN	3.09
GBS	3.04

2008	
All Subject	Academic
GBN	3.17
GBS	3.10

Source Data: District 225 OutCASTS and SASI-XP Database

Average ACT

	2008						
	Composite	English	Math	Reading	Science	Core (# of Students Tested)	Non-Core (# of Students Tested)
GBN	25.5	26.0	26.0	25.1	24.4	25.8 (294)	25.1 (118)
GBS	24.3	24.4	25.0	23.8	23.6	25.3 (411)	22.8 (172)
District	24.9	25.2	25.5	24.5	24.0	25.6	24.0
State	20.7	20.4	20.7	20.6	20.5	22.4	19.1
National	21.1	20.6	21.0	21.4	20.8	22.0	19.5

Source Data: ACT H.S. Profile Report - Graduating Class of 2008

Average ACT Score by Ethnicity for the District

	Count	2008			
		English Score	Math Score	Reading Score	Science Score
Caucasian	719	26	25	25	24
African American	15	18	21	22	20
Asian	157	26	27	25	24
Hispanic	43	21	22	21	20

The 2008 ACT H.S. Profile Report summarizes the preparation and performance of 2008 graduates who took the ACT Assessment during the 2005-06, 2006-07 or 2007-08 academic years. The most recent set of test score is used in this report for students testing more than one time.

Source Data: ACT H.S. Profile Report - Graduating Class of 2008

PSAE Performance Level By Subject Matter - District

	Reading			Mathematics			Science		
	2006	2007	2008	2006	2007	2008	2006	2007	2008
Exceeds	31.0%	26.4%	24.4%	23.2%	28.6%	30.1%	24.0%	24.4%	22.9%
Meets Standards	51.0%	54.2%	51.9%	58.3%	56.7%	51.8%	51.5%	54.6%	56.0%
Below Standards	15.5%	18.1%	20.6%	14.9%	12.2%	15.5%	21.6%	19.4%	18.7%
Academic Warning	2.6%	1.3%	3.1%	3.6%	2.4%	2.5%	2.9%	1.7%	2.4%

PSAE Assessment Scores Summary Report

PSAE Performance Level By Subject Matter - 2008

	Reading		Mathematics		Science	
	GBN	GBS	GBN	GBS	GBN	GBS
Exceeds	28.5%	21.2%	33.8%	27.2%	26.1%	20.4%
Meets Standards	53.2%	50.9%	51.7%	51.9%	58.0%	54.4%
Below Standards	16.5%	23.8%	13.6%	17.1%	14.9%	21.6%
Academic Warning	1.8%	4.2%	1.0%	3.7%	1.0%	3.6%

PSAE Assessment Scores Summary Report

PSAE Performance Level By Ethnicity for the DISTRICT - READING

	White		African American		Hispanic		Asian/Pacific Islander	
	2008	N	2008	N	2008	N	2008	N
Exceeds	27.0%	232	8.7%	*	5.2%	*	19.9%	39
Meets Standards	54.3%	467	30.4%	*	25.9%	15	53.1%	104
Below Standards	17.1%	147	56.5%	13	48.3%	28	23.0%	45
Academic Warning	1.6%	14	4.3%	*	20.7%	12	4.1%	*

* Indicates there are less than 10 students in at least one or both of the schools in the district

PSAE Assessment Scores Summary Report

PSAE Performance Level By Ethnicity for the DISTRICT - MATH

	White		African American		Hispanic		Asian/Pacific Islander	
	2008	N	2008	N	2008	N	2008	N
Exceeds	29.9%	257	4.3%	*	1.7%	1	42.9%	84
Meets Standards	55.0%	473	43.5%	10	29.3%	17	45.9%	90
Below Standards	13.3%	114	30.4%	*	60.3%	35	10.2%	20
Academic Warning	1.9%	16	21.7%	*	8.6%	5	1.0%	2

* Indicates there are less than 10 students in at least one or both of the schools in the district

PSAE Assessment Scores Summary Report

PSAE Performance Level By Ethnicity for the DISTRICT - SCIENCE

	White		African American		Hispanic		Asian/Pacific Islander	
	2008	N	2008	N	2008	N	2008	N
Exceeds	24.3%	209	8.7%	2	6.9%	4	23.0%	45
Meets Standards	58.7%	505	30.4%	7	17.2%	10	59.2%	116
Below Standards	15.8%	136	43.5%	10	58.6%	34	16.3%	32
Academic Warning	1.2%	10	17.4%	4	17.2%	10	1.5%	3

* Indicates there are less than 10 students in at least one or both of the schools in the district

PSAE Assessment Scores Summary Report

PSAE Performance Level - IEP Students - READING

	GBN						GBS					
	2006	N	2007	N	2008	N	2006	N	2007	N	2008	N
Exceeds	10.1%	7	14.3%	9	21.3%	13	6.3%	4	10.9%	6	7.3%	4
Meets Standards	33.3%	23	49.2%	31	45.9%	28	35.9%	23	30.9%	17	38.2%	21
Below Standards	31.9%	22	30.2%	19	26.2%	16	48.4%	31	47.3%	26	40.0%	22
Academic Warning	24.6%	7	6.3%	4	6.6%	4	9.4%	6	10.9%	6	14.5%	8
	100%	59	100%	63	100%	61	100%	64	100%	55	100%	55

PSAE Assessment Scores Summary Report

PSAE Performance Level - IEP Students - MATH

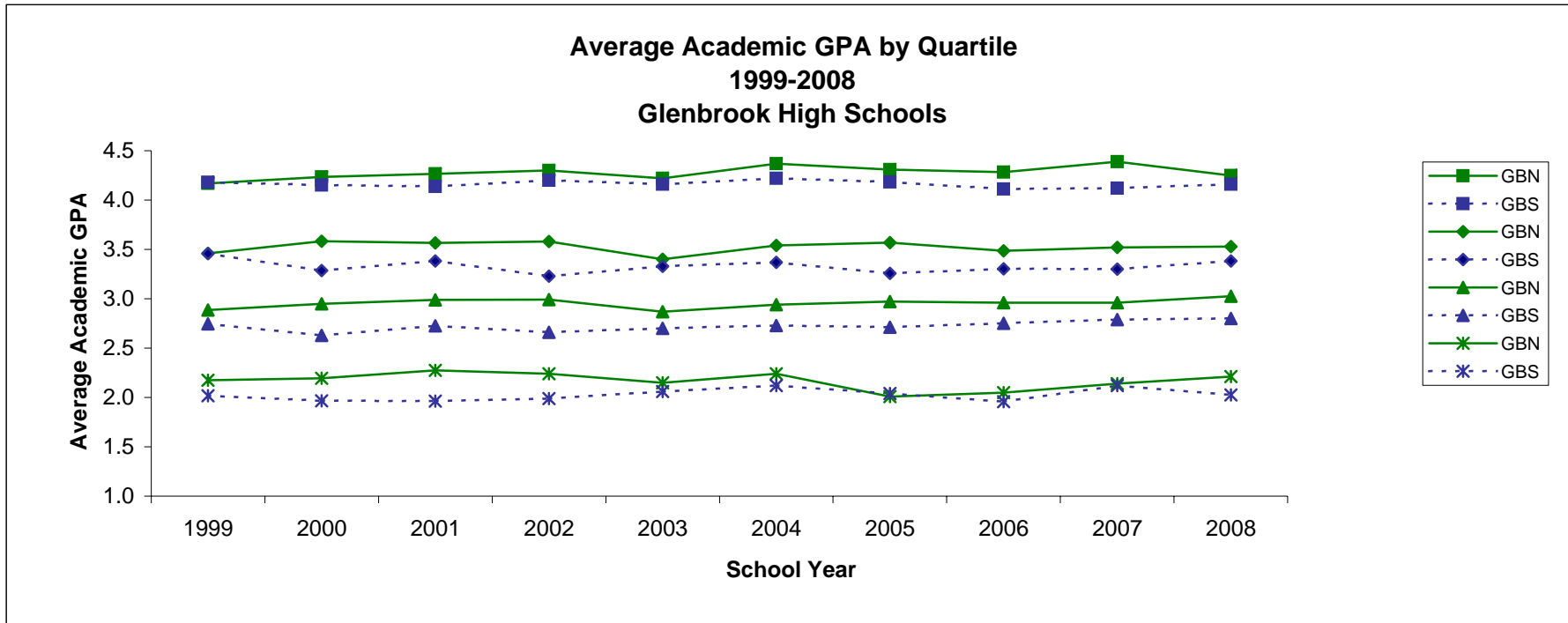
	GBN						GBS					
	2006	N	2007	N	2008	N	2006	N	2007	N	2008	N
Exceeds	2.9%	2	12.7%	8	9.8%	6	4.0%	1	9.1%	5	5.5%	3
Meets Standards	31.4%	22	36.5%	23	42.6%	26	28.0%	25	29.1%	16	36.4%	20
Below Standards	41.4%	29	36.5%	23	41.0%	25	40.0%	25	36.4%	20	34.5%	19
Academic Warning	24.3%	17	14.3%	9	6.6%	4	28.0%	13	25.5%	14	23.6%	13
	100%	70	100%	63	100%	61	100%	64	100%	55	100%	55

PSAE Assessment Scores Summary Report

PSAE Performance Level - IEP Students - SCIENCE

	GBN						GBS					
	2006	N	2007	N	2008	N	2006	N	2007	N	2008	N
Exceeds	5.7%	2	12.7%	8	9.8%	6	3.1%	2	3.6%	2	9.1%	5
Meets Standards	24.3%	16	36.5%	23	45.9%	28	25.0%	16	30.4%	17	27.3%	15
Below Standards	54.3%	39	42.9%	27	37.7%	23	60.9%	39	46.4%	26	40.0%	22
Academic Warning	15.7%	7	7.9%	5	6.6%	4	10.9%	7	17.9%	10	23.6%	13
	100%	64	100%	63	100%	61	100%	64	98%	55	100%	55

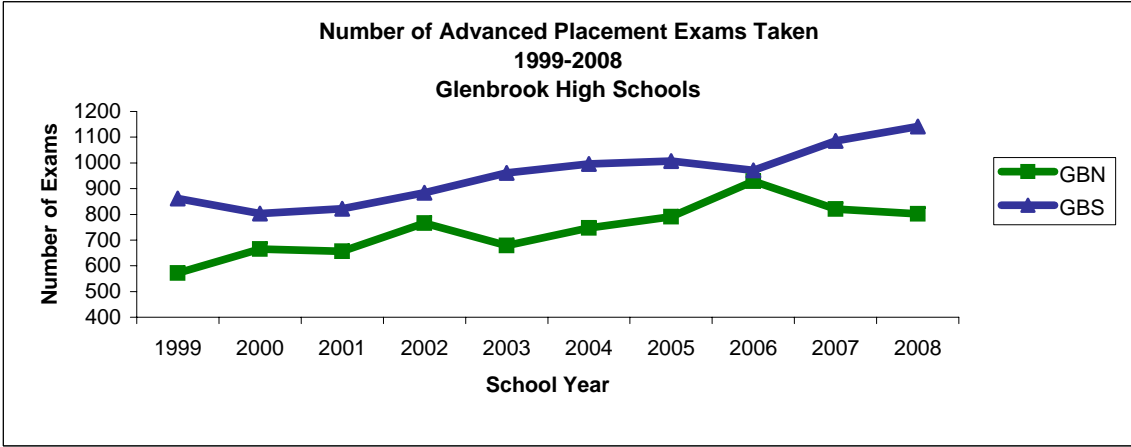
PSAE Assessment Scores Summary Report



* Academic Grade Point Average (GPA) includes only those courses in the areas of English, Foreign Language, Mathematics, Science, Social Studies and Honors level courses in elective areas. Grades are weighted according to course level. The range for Academic GPA = 0.0-5.0.

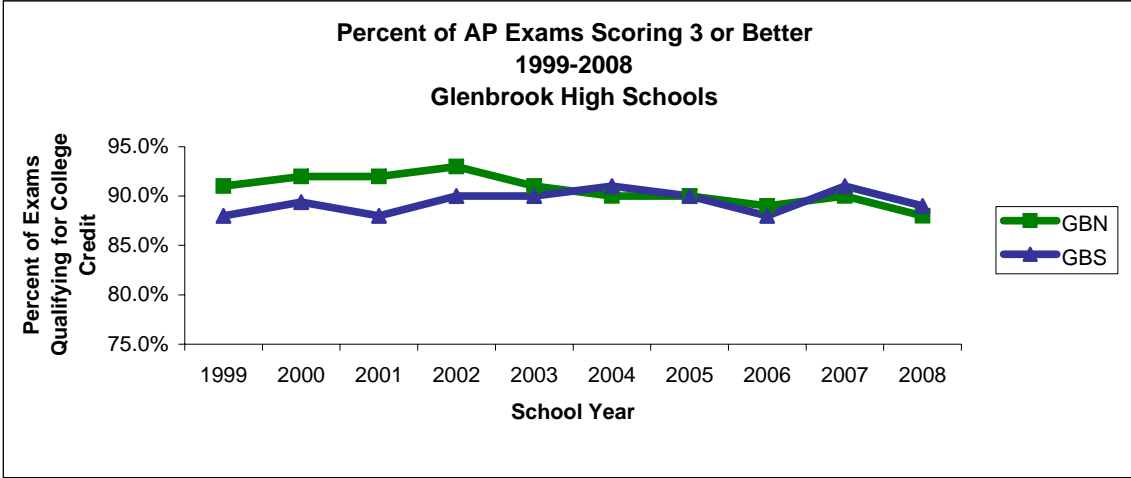
	1st quartile		2nd quartile		3rd quartile		4th quartile	
	GBN	GBS	GBN	GBS	GBN	GBS	GBN	GBS
1999	4.17	4.18	3.46	3.46	2.89	2.75	2.17	2.02
2000	4.24	4.15	3.58	3.29	2.95	2.63	2.19	1.97
2001	4.27	4.14	3.57	3.38	2.99	2.73	2.27	1.96
2002	4.30	4.20	3.58	3.23	2.99	2.66	2.24	1.99
2003	4.22	4.16	3.40	3.33	2.87	2.70	2.15	2.06
2004	4.37	4.22	3.54	3.37	2.94	2.73	2.24	2.12
2005	4.31	4.18	3.57	3.26	2.97	2.71	2.01	2.04
2006	4.28	4.11	3.49	3.30	2.96	2.75	2.05	1.96
2007	4.39	4.12	3.52	3.30	2.96	2.79	2.14	2.12
2008	4.25	4.16	3.53	3.38	3.03	2.80	2.21	2.03

Quartile is determined by taking the total number of students, ranking the GPA, dividing the total number of student by four and taking the average GPAs of the students.



Number of AP exams taken

	GBN	GBS
1999	572	862
2000	665	803
2001	656	822
2002	766	884
2003	679	961
2004	747	996
2005	791	1007
2006	929	971
2007	821	1085
2008	802	1142



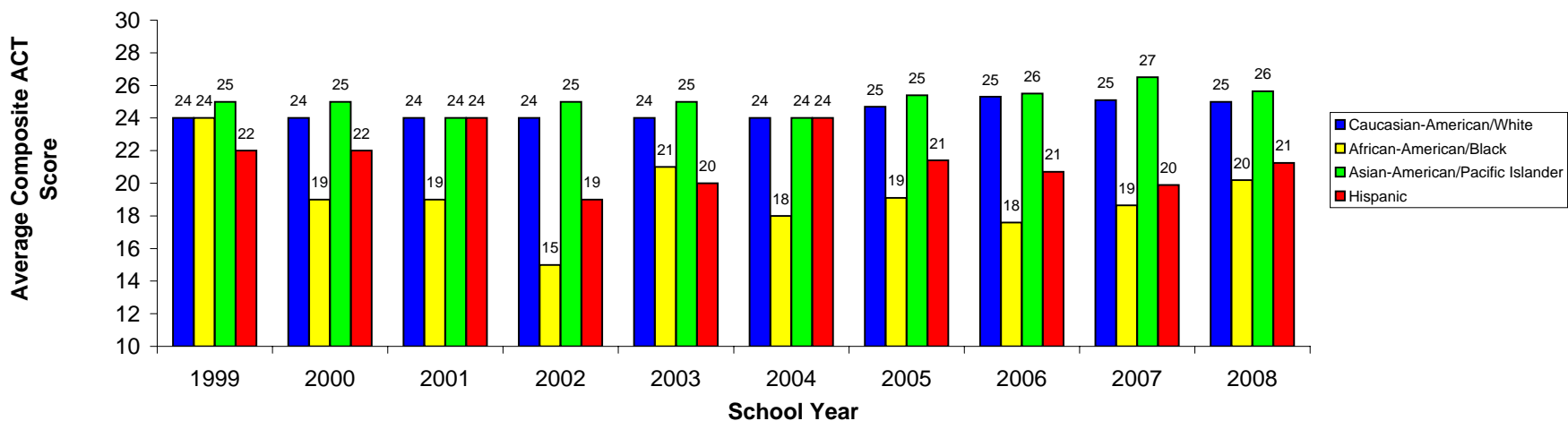
% qualified for college credit

	GBN	GBS
1999	91% (521)	88% (759)
2000	92% (612)	89% (718)
2001	92% (604)	88% (723)
2002	93% (712)	90% (792)
2003	91% (617)	90% (862)
2004	90% (675)	91% (907)
2005	90% (712)	90% (909)
2006	89% (826)	88% (855)
2007	90% (738)	91% (986)
2008	88% (704)	89% (1025)

The test scores range 0-5.

Analysis:
The number of AP exams taken has increased steadily over the past 10 years, with approximately 90% of all students who take the exams qualifying for college credit .

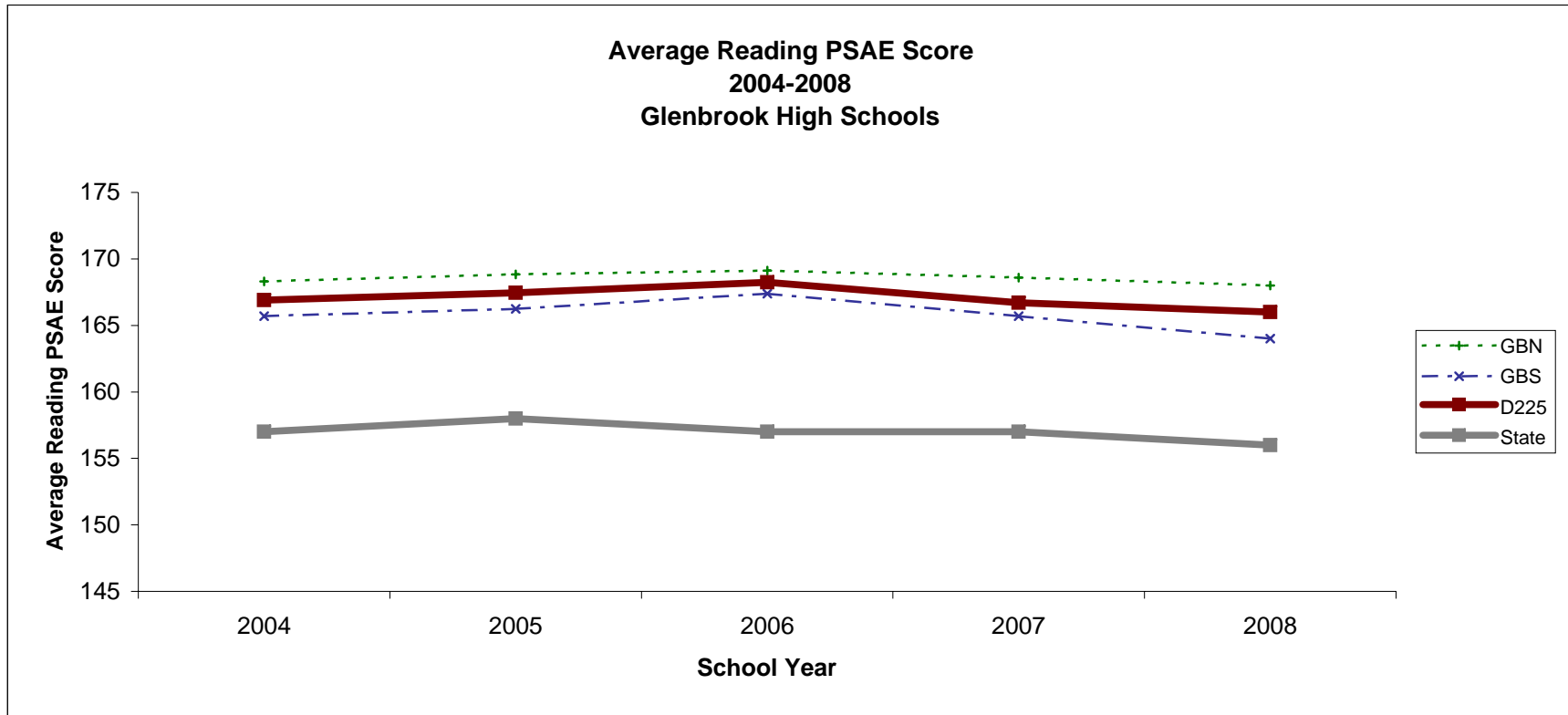
**Average Composite ACT Score (By Ethnicity)
1999-2008
Glenbrook High Schools**



* ACT scores range 1-36. These scores include all graduating seniors who took the ACT during their sophomore, junior or senior year. If a student tested more than once, only their most recent test scores are used. There were fewer than two American Indian/Alaskan native test takers each year. Note: Starting in 2001, the ACT scores include those taken as part of the Prairie State Achievement Exam.

Average Composite ACT Score (By Ethnicity)

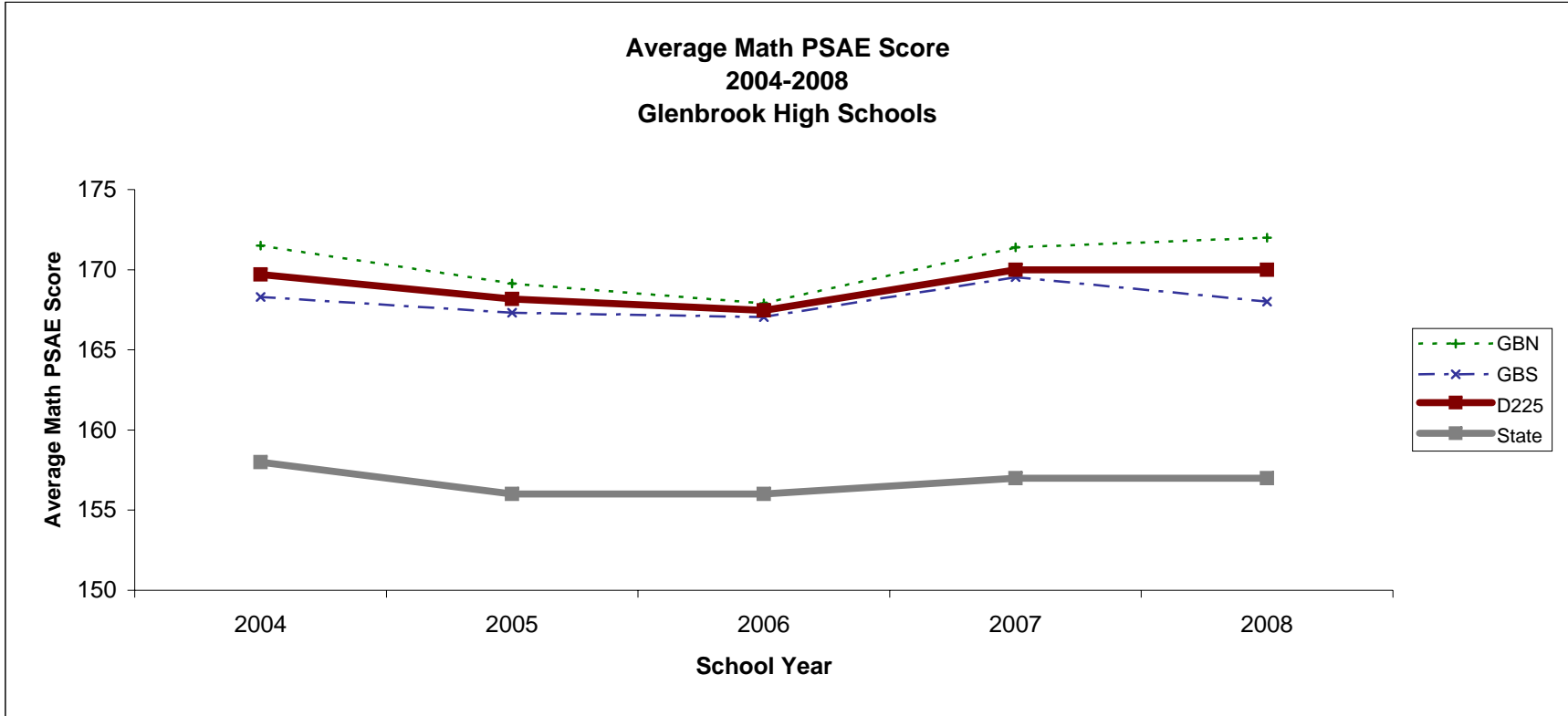
	Caucasian-American/White	African-American/Black	Asian-American/Pacific Islander	Hispanic
1999	24 (528)	24 (7)	25 (148)	22 (16)
2000	24 (640)	19 (7)	25 (172)	22 (20)
2001	24 (608)	19 (5)	24 (85)	24 (15)
2002	24 (655)	15 (8)	25 (156)	19 (31)
2003	24 (700)	21 (13)	25 (160)	20 (33)
2004	24 (727)	18 (11)	24 (143)	24 (32)
2005	25 (691)	19 (11)	25 (175)	21 (38)
2006	25 (659)	18 (5)	26 (134)	21 (27)
2007	25 (619)	19 (13)	27 (161)	20 (44)
2008	25 (719)	20 (15)	26 (157)	21 (43)



* Prairie State Achievement Exam (PSAE) is an Illinois state mandated test for all juniors beginning in 2001. PSAE Reading Scores range 120-200.

Average Reading PSAE Score

	GBN	GBS	D225	State
2004	168	166	167	157
2005	169	166	167	158
2006	169	167	168	157
2007	169	166	167	157
2008	168	164	166	156

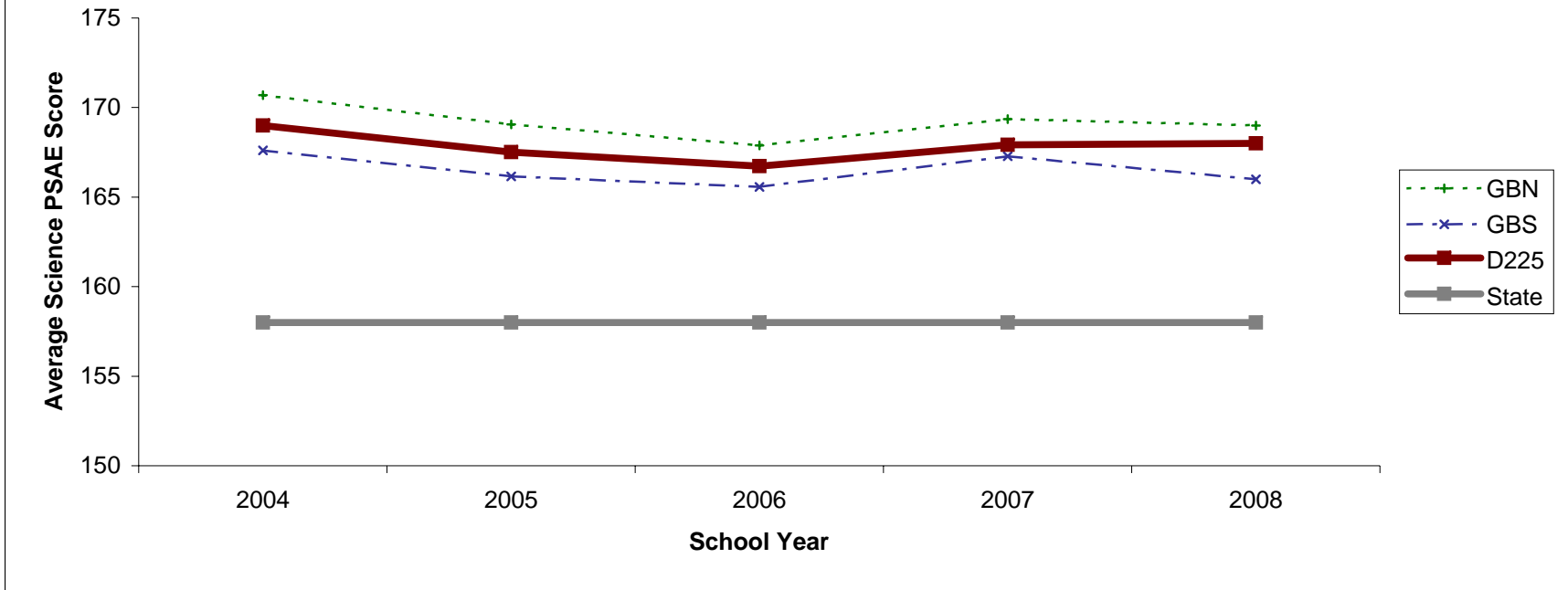


* Prairie State Achievement Exam (PSAE) is an Illinois state mandated test for all juniors beginning in 2001. PSAE Math Scores range 120-200.

Average Math PSAE Score

	GBN	GBS	D225	State
2004	172	168	170	158
2005	169	167	168	156
2006	168	167	167	156
2007	171	170	170	157
2008	172	168	170	157

**Average Science PSAE Score
2004-2008
Glenbrook High Schools**

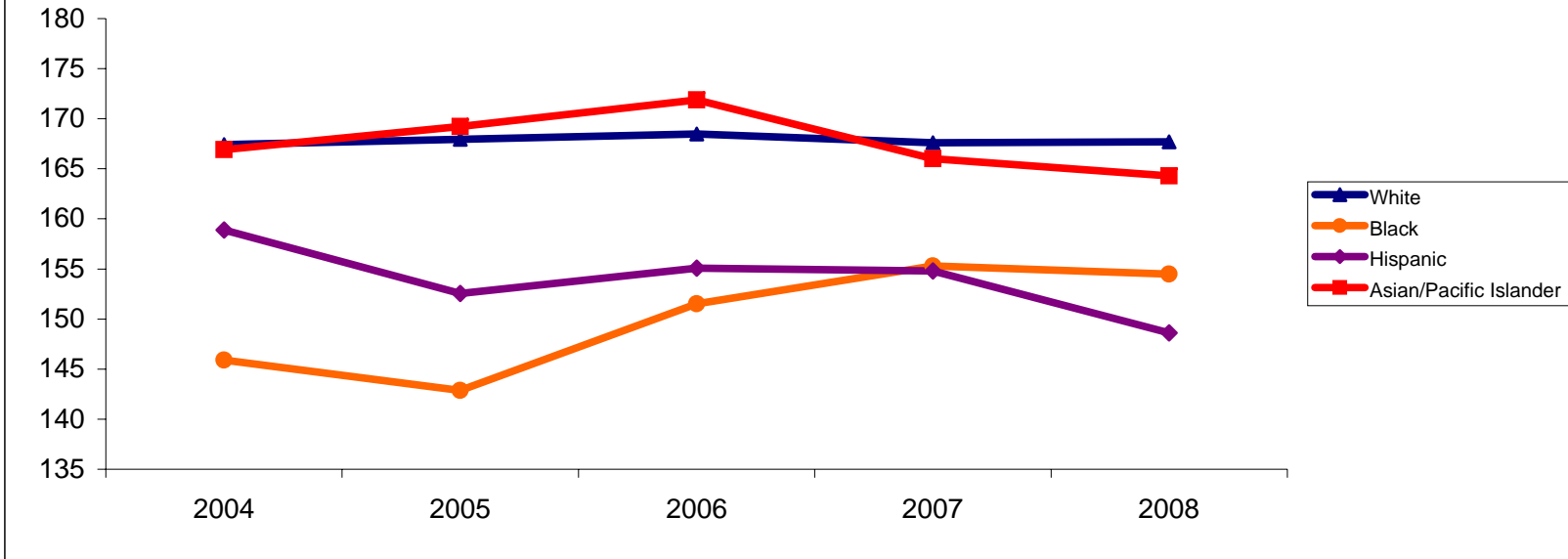


* Prairie State Achievement Exam (PSAE) is an Illinois state mandated test for all juniors beginning in 2001. PSAE Science Scores range 120-200.

Average Science PSAE Score

	GBN	GBS	D225	State
2004	171	168	169	158
2005	169	166	168	158
2006	168	166	167	158
2007	169	167	168	158
2008	169	166	168	158

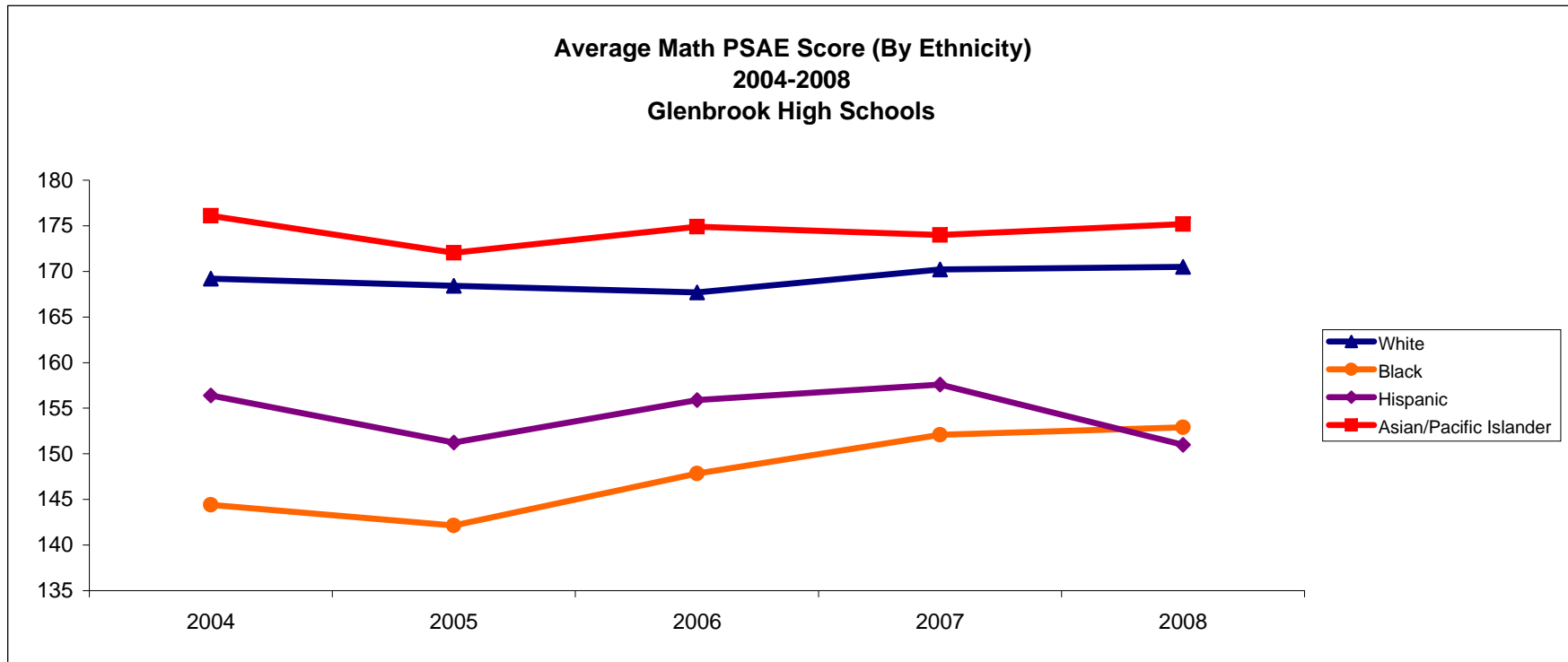
**Average Reading PSAE Score (By Ethnicity)
2004-2008
Glenbrook High Schools**



* Prairie State Achievement Exam (PSAE) is an Illinois state mandated test for all juniors beginning in 2001. PSAE Reading Scores range 120-200.

Average Reading PSAE Score (By Ethnicity)

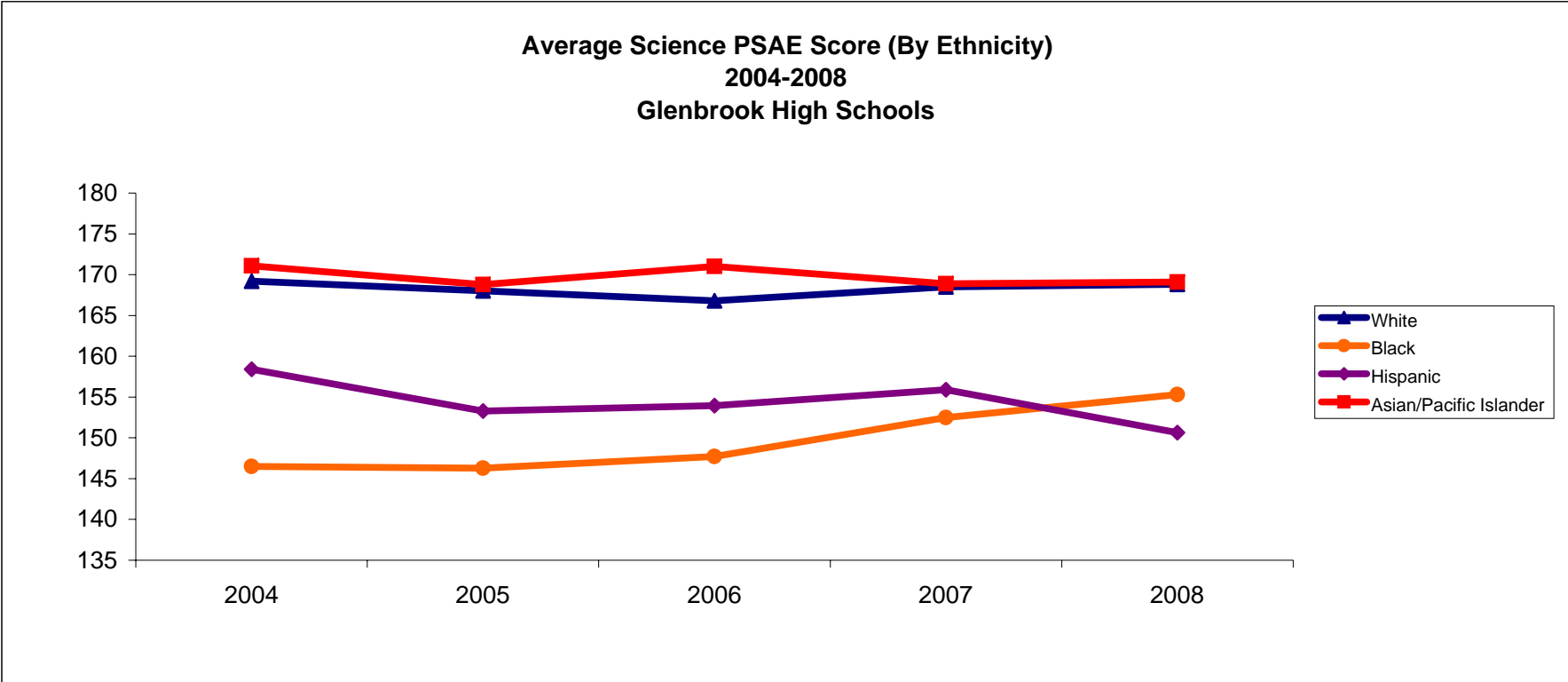
	White	Black	Hispanic	Asian/Pacific Islander
2004	167.4	145.9	158.9	166.9
2005	168.0	142.9	152.6	169.2
2006	168.5	151.5	155.1	171.9
2007	167.6	155.3	154.8	166.0
2008	167.7	154.5	148.6	164.3



* Prairie State Achievement Exam (PSAE) is an Illinois state mandated test for all juniors beginning in 2001. PSAE Math Scores range 120-200.

Average Math PSAE Score (By Ethnicity)

	White	Black	Hispanic	Asian/Pacific Islander
2004	169.2	144.4	156.4	176.1
2005	168.4	142.1	151.2	172.1
2006	167.7	147.9	155.9	174.9
2007	170.2	152.1	157.6	174.0
2008	170.5	152.9	151.0	175.2

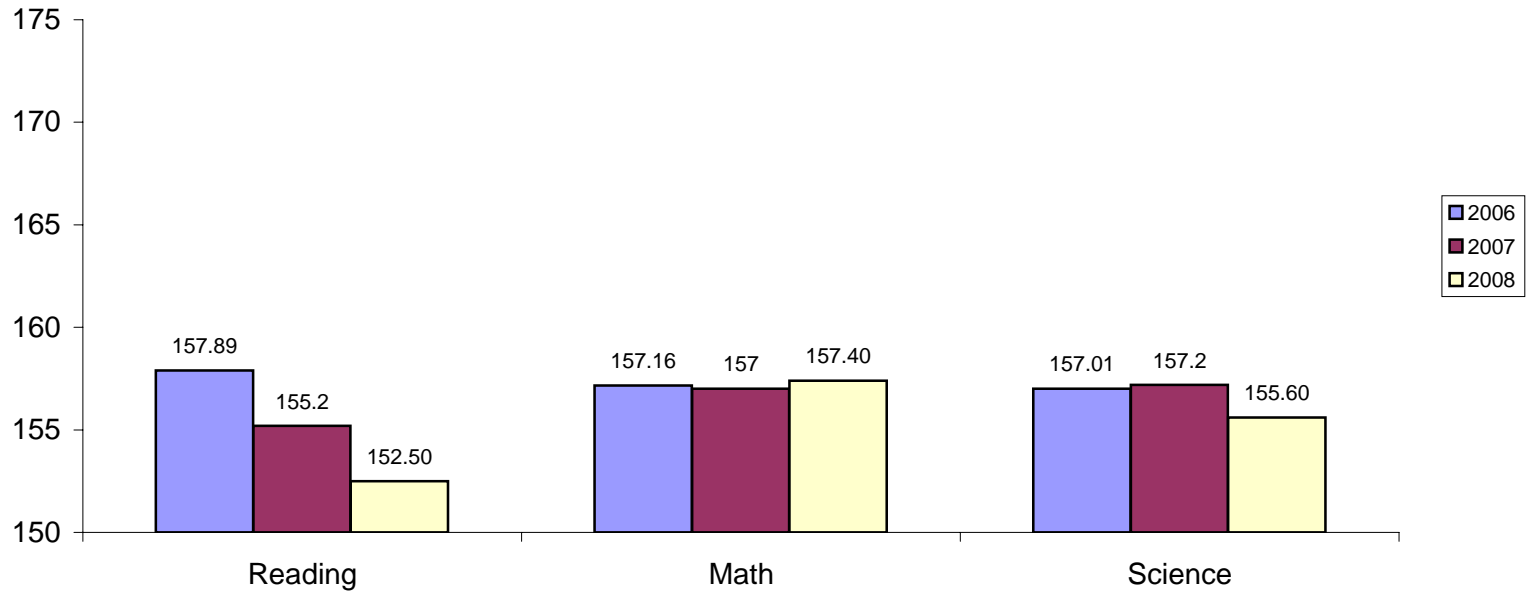


* Prairie State Achievement Exam (PSAE) is an Illinois state mandated test for all juniors beginning in 2001. PSAE Science Scores range 120-200.

Average Science PSAE Score (By Ethnicity)

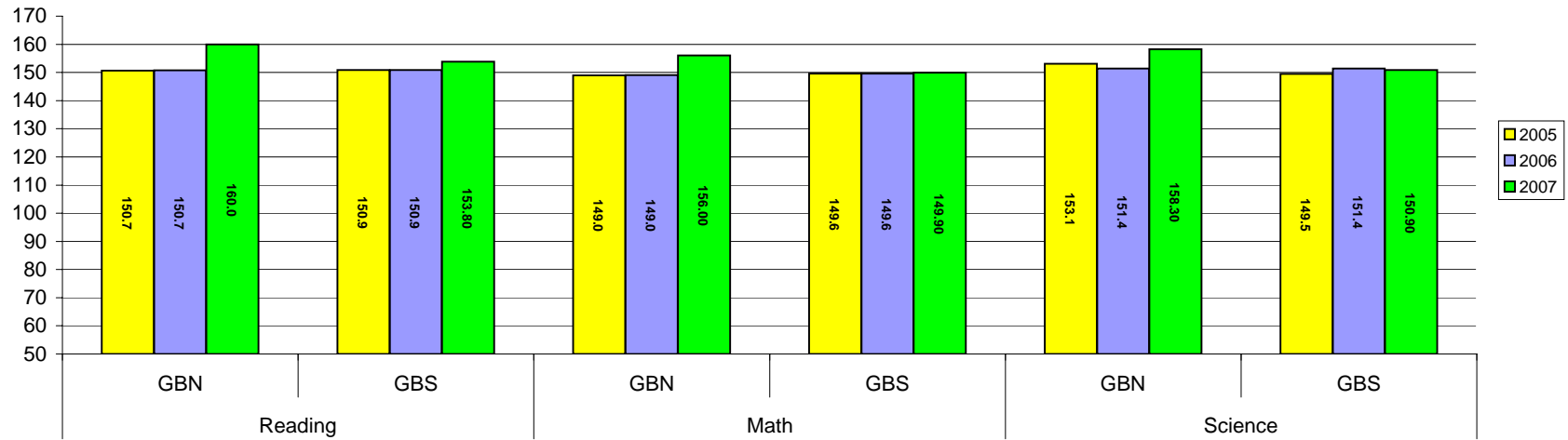
	White	Black	Hispanic	Asian/Pacific Islander
2004	169.2	146.5	158.4	171.1
2005	168.0	146.3	153.3	168.8
2006	166.8	147.7	153.9	171.0
2007	168.5	152.5	155.9	168.9
2008	168.8	155.3	150.6	169.1

**Average PSAE Scores by Subject Area (Low Income Students)
2006-2008
Glenbrook High Schools**



	2006	n	2007	n	2008	n
Reading	157.89	75	155.2	81	152.5	107
Math	157.16	75	157	81	157.4	107
Science	157.01	75	157.2	81	155.6	107

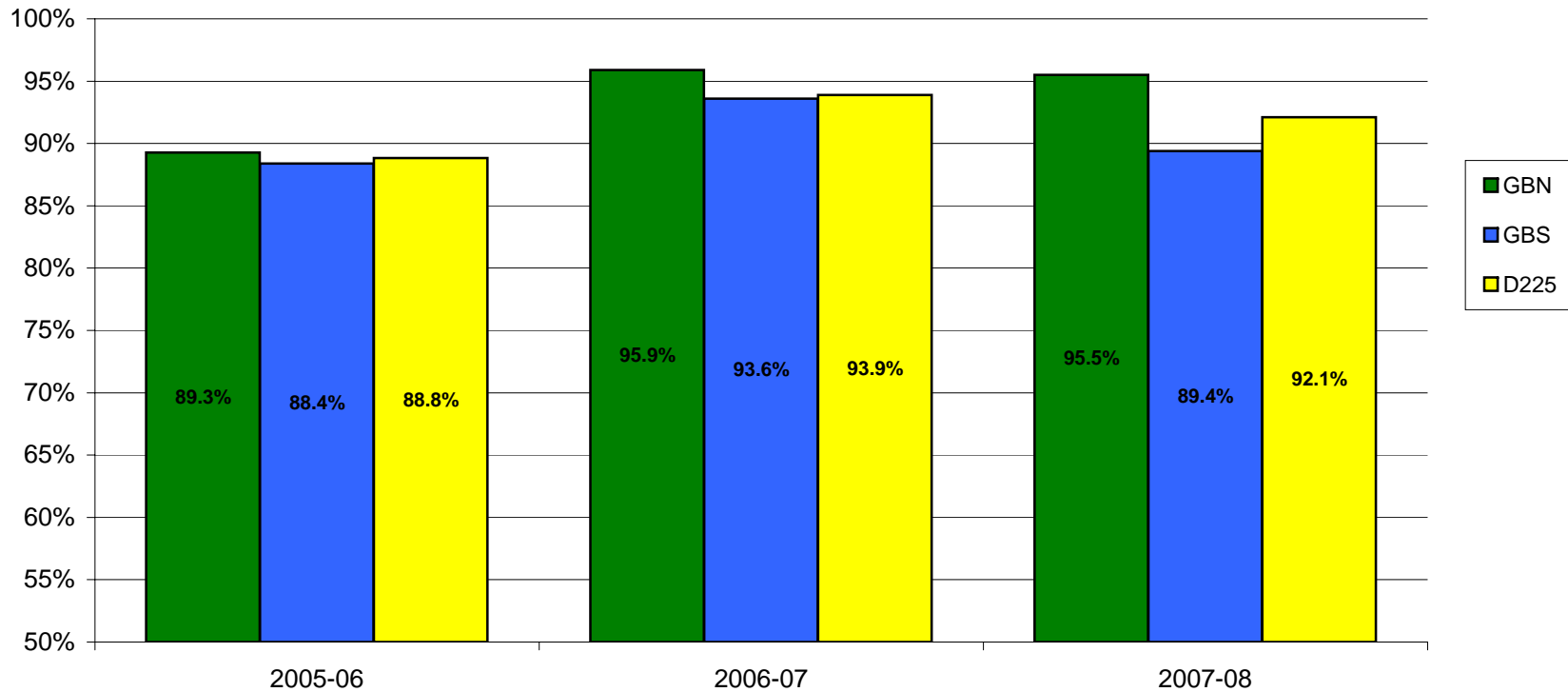
**Average PSAE Scores by Subject Area (Special Education)
2006-2008
Glenbrook High Schools**



Average PSAE Scores by Subject Area (Special Ed)

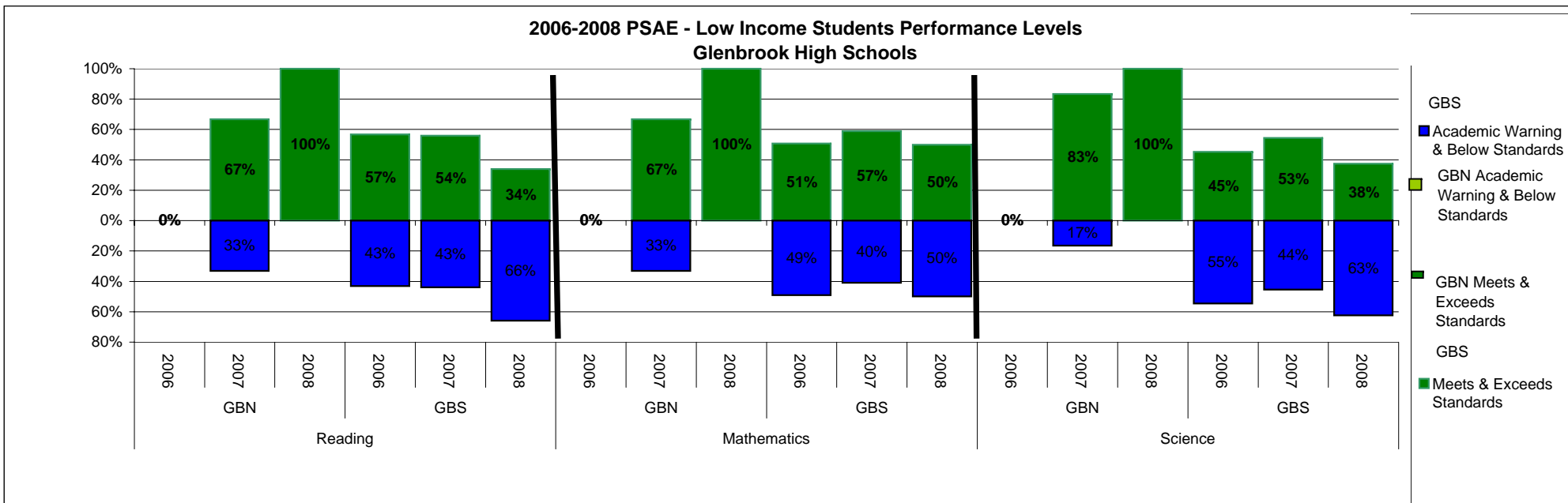
	Reading				Math				Science			
	GBN	n	GBS	n	GBN	n	GBS	n	GBN	n	GBS	n
2006	150.7	70	150.9	64	149.0	70	149.6	64	151.4	70	151.4	64
2007	160.0	63	153.8	55	156.0	63	149.9	55	158.3	63	150.9	55
2008	160.8	61	151.6	55	157.8	61	150.3	55	158.8	61	150.7	55

**PSAE - Percentage of Students Meeting or Exceeding in at Least One PSAE Subject Area
Glenbrook High Schools
2005-2006 to 2007-2008 School Years**



PSAE - Percent of Students Meeting or Exceeding

	GBN	GBS	D225
2005-06	89.3%	88.4%	88.8%
2006-07	95.9%	93.6%	93.9%
2007-08	95.5%	89.4%	92.1%



	Reading									Mathematics									Science																										
	GBN			GBS			GBN			GBS			GBN			GBS			GBN			GBS																							
	2006	n	2007	n	2008	n	2006	n	2007	n	2008	n	2006	n	2007	n	2008	n	2006	n	2007	n	2008	n																					
Exceeds	*		*		25.0%	*		13.4%	9	8.6%	*		7.0%	*		0.0%	*		25.0%	*		3.0%	2	4.3%	*		9.0%	*		4.3%	*		16.7%	*		25.0%	*		11.0%	7	4.3%	*		7.0%	*
Meets	*		66.7%	*	75.0%	*		43.3%	29	45.7%	32	27.0%	26	0.0%		66.7%	*		75.0%	*		47.8%	32	52.9%	37	41.0%	39	52.9%		66.7%	*		75.0%	*		34.3%	23	48.6%	34	30.0%	29				
Below	*		33.3%	*	0.0%	*		38.8%	26	35.7%	25	52.0%	50	0.0%		33.3%	*		0.0%	*		35.8%	24	31.4%	22	39.0%	37	-31.4%		16.7%	*		0.0%	*		48.0%	32	37.1%	26	48.0%	46				
Academic Warning	*		*		0.0%	*		4.5%	3	7.1%	*		14.0%	13	0.0%		*		0.0%	*		13.4%	9	8.6%	*		11.0%	11	-8.6%		*		0.0%	*		6.7%	5	7.1%	*		15.0%	14			

* Indicates there are less than 10 students in at least one or both of the schools in the district.